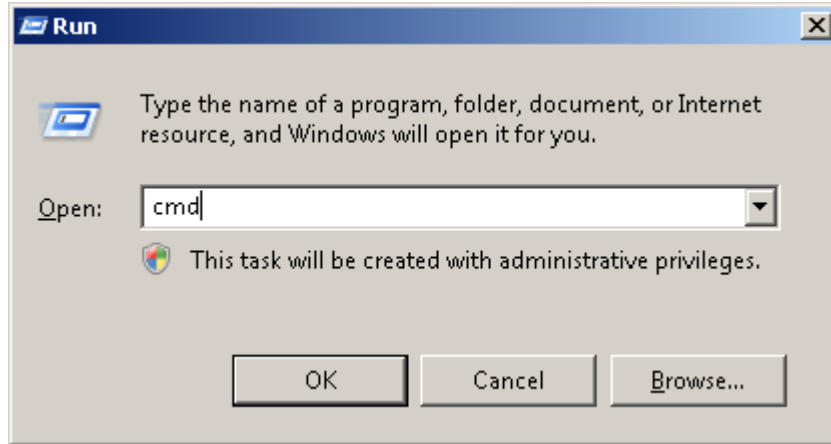


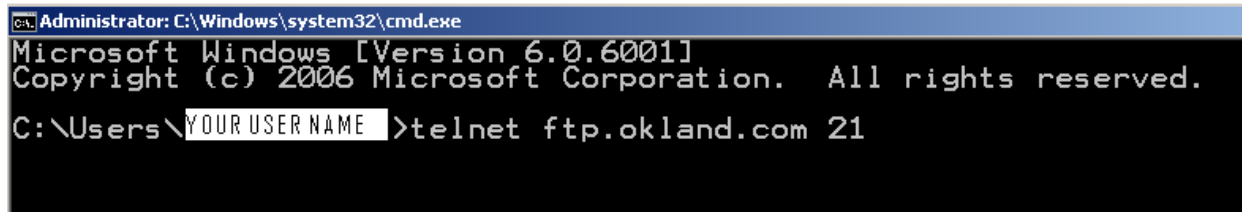
If you cannot establish a connection with Okland's FTP site, please take a moment and test your company firewall to see if they are permitting traffic out on port 21. Do this by opening a DOS prompt and telnetting to port 21 on Okland's FTP site.

1. Click on "START" then "RUN"
2. Type "CMD" and press "OK"



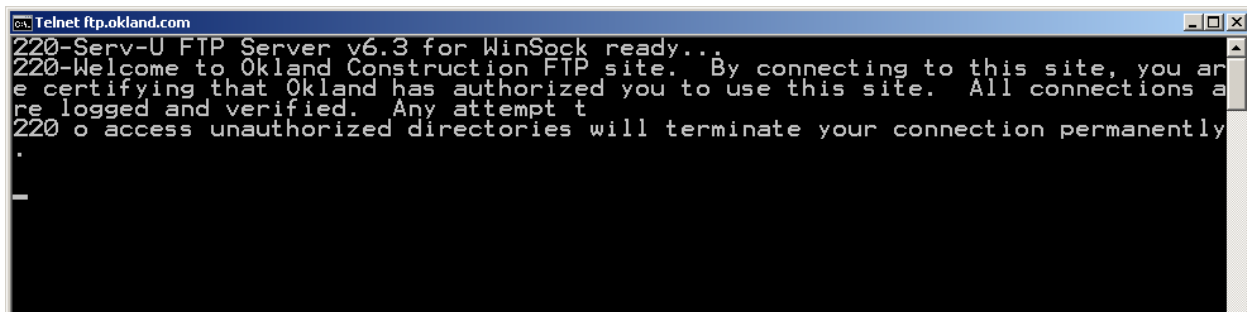
A DOS window should appear.

3. Type the following in your dos window: "telnet ftp.okland.com 21" (It doesn't matter the path of your DOS prompt)



You should receive the following in your dos window:

```
220-Serv-U FTP Server v6.0 for WinSock ready...
220-Welcome to Okland Construction FTP site. By connecting to this site, you are
certifying that Okland has authorized you to use this site. All connections are
logged and verified. Any attempt to
220 o access unauthorized directories will terminate your connection permanently
```



If you are successful and see the above message, you have successfully connected to Okland's FTP site. More than likely the problem is with your computer and will need to contact your technical support to assist you further with your computer. If you do not see the above message, your company is blocking port 21 on the firewall. You will need to contact your network administrator and ask them to open port 21 on the firewall.